

OVER:FACE

PENG CHANG

張朋



Height
171

Bust
78

Waist
58

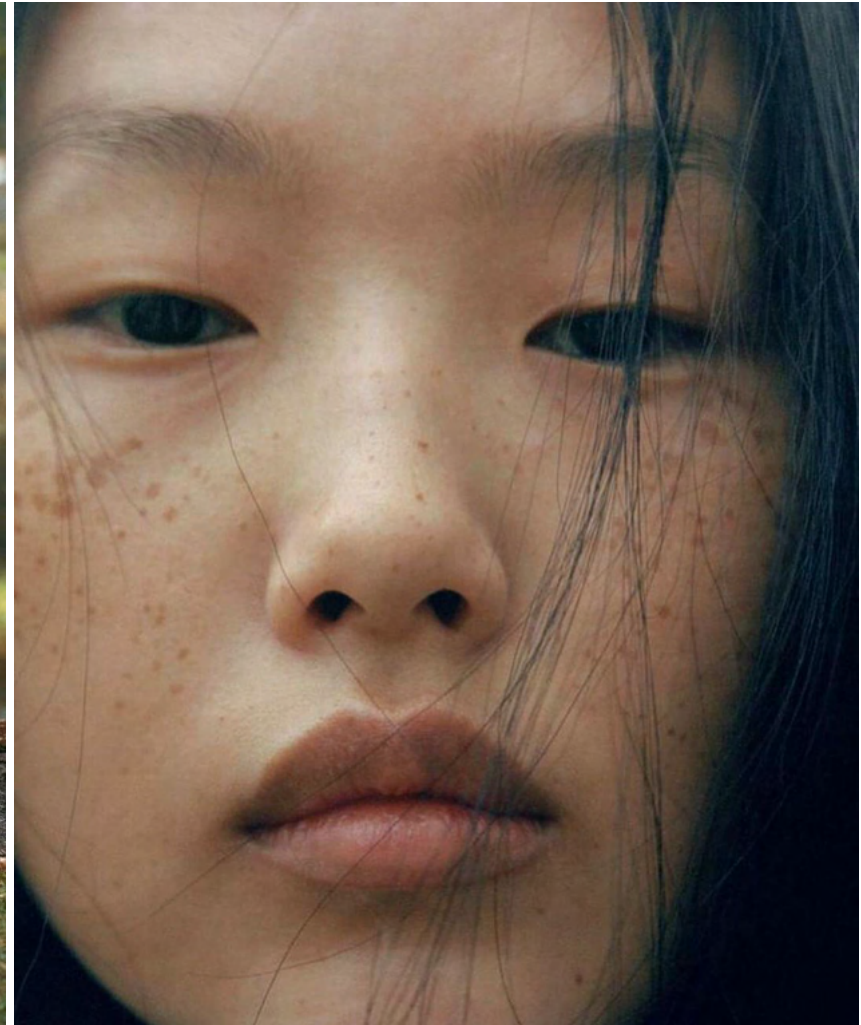
Hips
87

Shoes
US7.5

Hair
Black

Eyes
Black

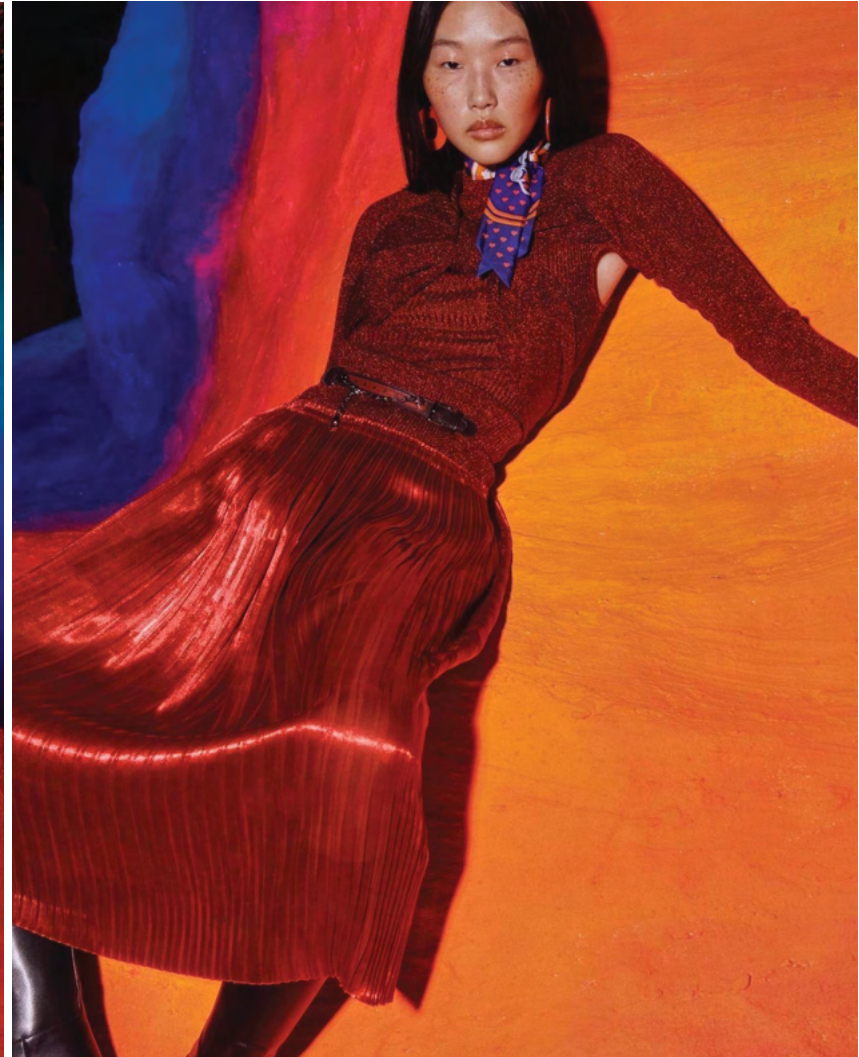
PENG CHANG



System x Burberry
photographed by LENA C. EMERY

OVER:FACE
MODELS

PENG CHANG



Hermès Brides de Gala
photographed by TOM JONSON

OVER:FACE
MODELS

PENG CHANG



Atmos Volume 09 2024
photographed by TELIZAVETA PORODINA

OVER:FACE
MODELS



PENG CHANG



PENG CHANG



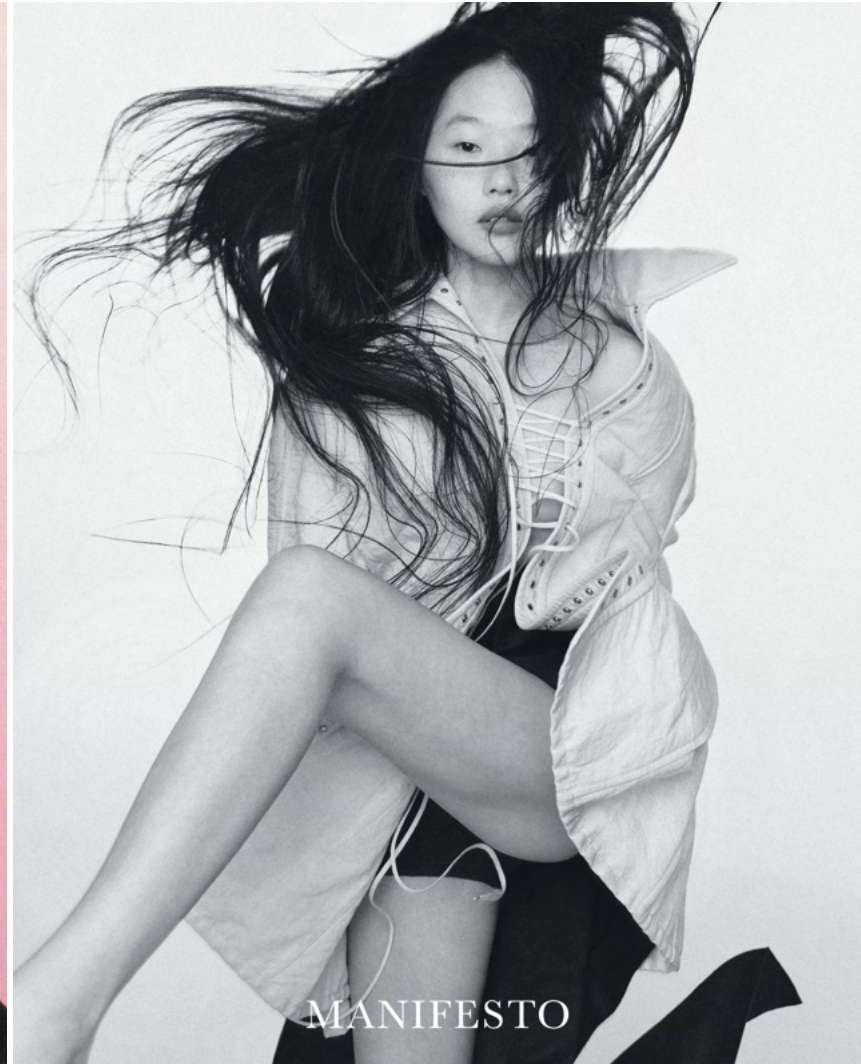
T: The NYTimes Style Magazine
photographed by RONAN MCKENZIE

OVER:FACE
MODELS

PENG CHANG



PENG CHANG



PENG CHANG



Vogue Taiwan Cover
photographed by ZHONG LIN

OVER:FACE
MODELS

OVER:FACE

MODELS

overfacemodels.com

Booking Contact : ann@overfacemodels.com